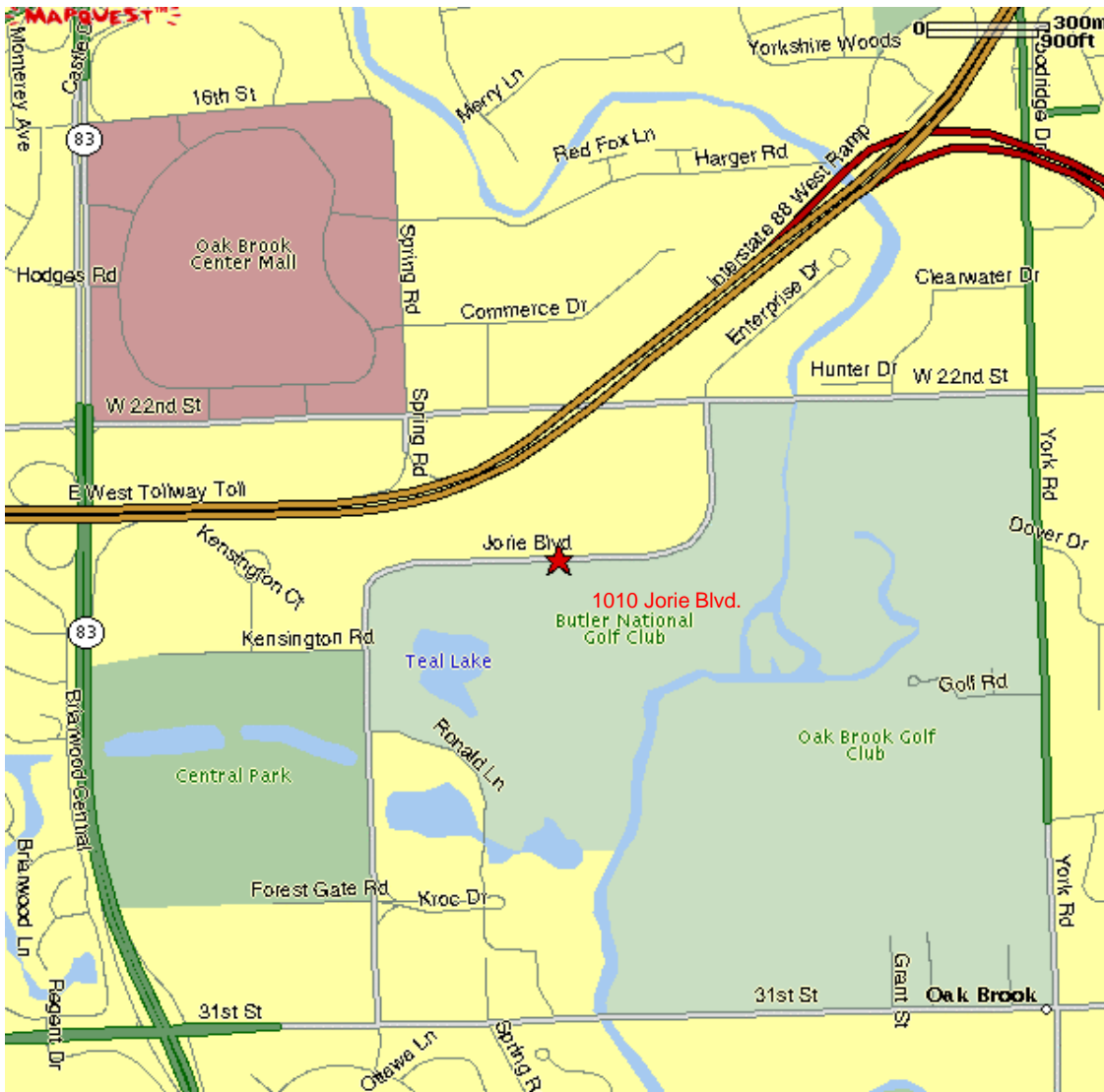


University of Illinois Oak Brook Center
1010 Jorie Blvd., Suite 200, Oak Brook



Directions:

If you will be traveling on the Eisenhower Expressway, take these directions to by-pass the toll plaza at Cermak Rd. in Oak Brook.

Take I-290 West. Merge onto E WEST TOLLWAY/ I-88 W via exit number 15A- on the left- toward INDIANA/AURORA. Stay in the right lane as you enter and travel on Roosevelt Rd. westbound. Take the York Rd. South exit. Travel three stoplights to 22nd street or Cermak Rd. Take a right and head west. Travel west to the very next stop light which is Jorie Blvd. Turn left onto Jorie. 1010 Jorie is the fourth building on the right (approximately ½ mile).

From O'Hare or I-294 South: I-294 South to I-88. Exit at Cermak Rd. (22nd St.). At stoplight, Cermak or 22nd St., turn right. Go two stoplights to Jorie Blvd. Turn right onto Jorie. 1010 Jorie is the fourth building on the right (approximately ½ mile).

I-355 from North/South or I-88 West: From either direction, take I-88 exit (East to Chicago). Take I-88 to Midwest Rd. Exit at light (Midwest Rd.), and turn left. Take Midwest Rd. to 31st St. and turn left. 1010 Jorie is on the left.

PLEASE NOTE:

From the perspective of the map above, the east side of the building is 1000 Jorie. The west side is 1010 Jorie. There are entrances to the parking lot in the rear at both ends of the building. The rear doors are marked. Enter at 1010 Jorie. Cars parked in front of the building will be ticketed.